

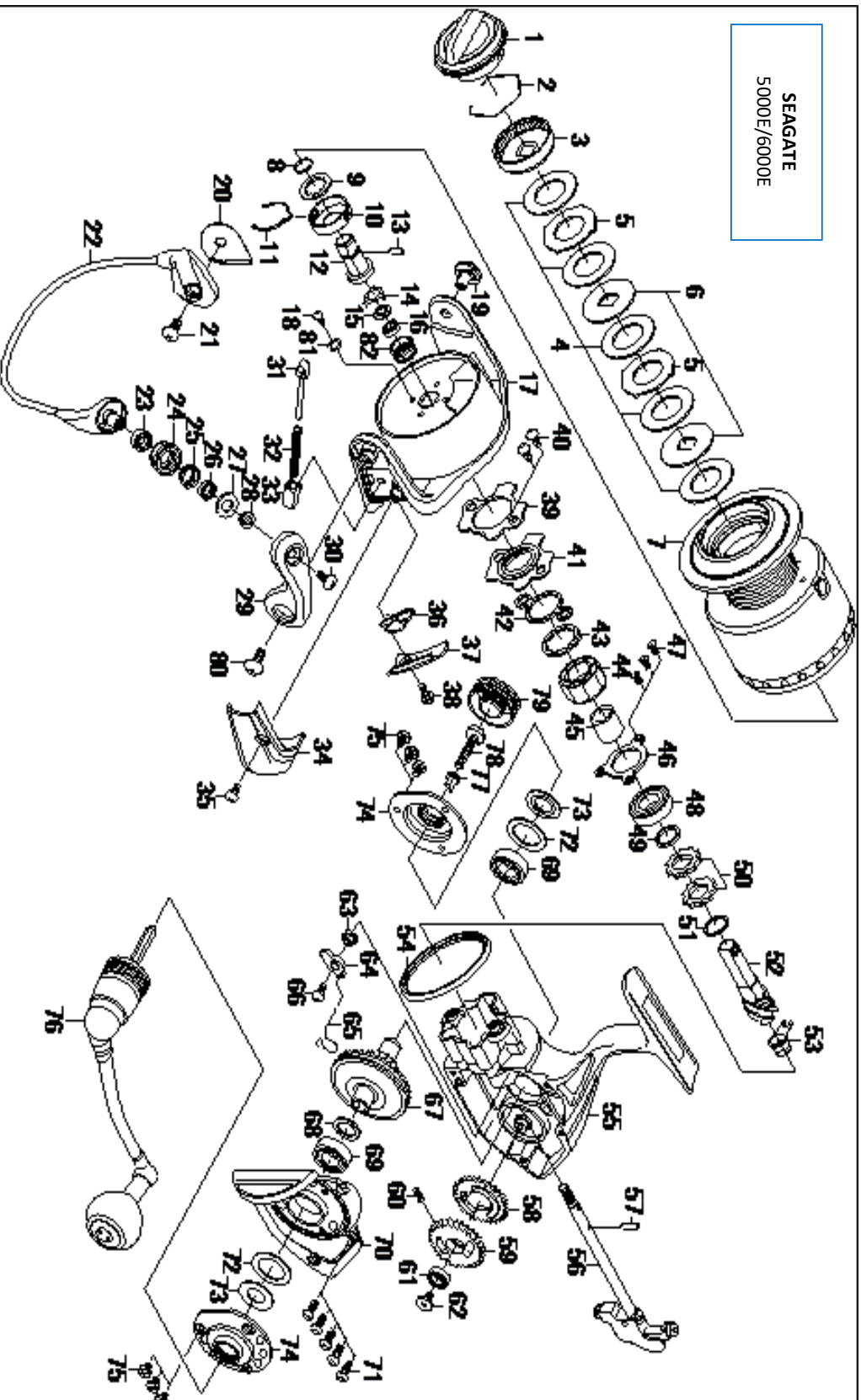


SEAGATE 5000E

Feel Alive.

Please quote by part number, not key number when ordering.
spares@daiwaaustralia.com.au PH: (02) 8644 8644

SEAGATE
5000E/6000E



| REEL NAME | MGFT CODE | KEY NO | PARTS CODE | DESCRIPTION |
|---------------|-----------|--------|------------|--------------------------|
| SEAGATE 5000E | | 1 | 6H438301 | Drag knob |
| SEAGATE 5000E | | 2 | 6F710001 | Drag washer retainer |
| SEAGATE 5000E | | 3 | 6G165602 | Drag knob click plate |
| SEAGATE 5000E | | 4 | 6H247201 | Drag washer |
| SEAGATE 5000E | | 5 | 6G165902 | Eared washer |
| SEAGATE 5000E | | 6 | 6G162702 | DRAG DISC WASHER |
| SEAGATE 5000E | | 8 | 6G339401 | "O" ring |
| SEAGATE 5000E | | 9 | 6G341501 | Washer (A) |
| SEAGATE 5000E | | 10 | 6G341301 | Click leaf spring holder |
| SEAGATE 5000E | | 11 | 6G341401 | Spool click leaf spring |
| SEAGATE 5000E | | 12 | 6H378701 | Spool metal |
| SEAGATE 5000E | | 13 | 6G339301 | Pin (A) |
| SEAGATE 5000E | | 14 | 6H107301 | Bearing retainer (A) |
| SEAGATE 5000E | | 15 | 6H107201 | Packing (A) |
| SEAGATE 5000E | | 16 | 6G467102 | Ball bearing (A) |
| SEAGATE 5000E | | 17 | 6H324403 | Rotor |
| SEAGATE 5000E | | 18 | 6E492001 | Screw (A) |
| SEAGATE 5000E | | 19 | 6H325002 | Bail holder nut |
| SEAGATE 5000E | | 20 | 6H324801 | Plate |
| SEAGATE 5000E | | 21 | 63516105 | Screw (B) |
| SEAGATE 5000E | | 22 | 6H365302 | Bail assembly |
| SEAGATE 5000E | | 23 | 6H035502 | Collar (A) |
| SEAGATE 5000E | | 24 | 6H246103 | Line roller |
| SEAGATE 5000E | | 25 | 6G740601 | Collar (B) |
| SEAGATE 5000E | | 26 | 6G370905 | Ball bearing (B) |
| SEAGATE 5000E | | 27 | 6G740501 | Packing (B) |
| SEAGATE 5000E | | 28 | 6H271201 | Collar (C) |
| SEAGATE 5000E | | 29 | 6H339601 | Bail arm |
| SEAGATE 5000E | | 30 | 6F608901 | Screw (C) |
| SEAGATE 5000E | | 31 | 6H324701 | Bail spring shaft |
| SEAGATE 5000E | | 32 | 6G418101 | Bail spring |
| SEAGATE 5000E | | 33 | 6G337501 | Bail spring holder |
| SEAGATE 5000E | | 34 | 6H325402 | Bail spring cover |
| SEAGATE 5000E | | 35 | 63522510 | Screw (D) |
| SEAGATE 5000E | | 36 | 6G337601 | Rotor brake spring |
| SEAGATE 5000E | | 37 | 6H324902 | Rotor brake spring cover |
| SEAGATE 5000E | | 38 | 63522510 | Screw (E) |
| SEAGATE 5000E | | 39 | 6H244201 | Roller clutch retainer |
| SEAGATE 5000E | | 40 | 63516101 | Screw (F) |
| SEAGATE 5000E | | 41 | 6H244101 | Packing (C) |
| SEAGATE 5000E | | 42 | 6H244001 | Clutch cam retainer |
| SEAGATE 5000E | | 43 | 6H247601 | Clutch cam |
| SEAGATE 5000E | | 44 | 6G314501 | Roller clutch |
| SEAGATE 5000E | | 45 | 6H172703 | Spacing sleeve |
| SEAGATE 5000E | | 46 | 6H244501 | Bearing retainer (B) |
| SEAGATE 5000E | | 47 | 6G557101 | Screw (G) |
| SEAGATE 5000E | | 48 | 6G426301 | Ball bearing (C) |
| SEAGATE 5000E | | 49 | 6H243901 | Collar (D) |
| SEAGATE 5000E | | 50 | 6E262701 | Ratchet |
| SEAGATE 5000E | | 51 | 6E339701 | Washer (B) |
| SEAGATE 5000E | | 52 | 6H323601 | Pinion gear |
| SEAGATE 5000E | | 53 | 6H323501 | Collar (E) |
| SEAGATE 5000E | | 54 | 6G337101 | Brake ring |
| SEAGATE 5000E | | 55 | 6H437401 | Body assembly |
| SEAGATE 5000E | | 56 | 6H437501 | Main shaft |
| SEAGATE 5000E | | 57 | 6G338901 | Pin (B) |
| SEAGATE 5000E | | 58 | 6H323101 | Oscillating gear (A) |
| SEAGATE 5000E | | 59 | 6H323001 | Oscillating gear (B) |
| SEAGATE 5000E | | 60 | 6G157401 | Oscillating gear spring |
| SEAGATE 5000E | | 61 | 6B861704 | Ball bearing (D) |

